

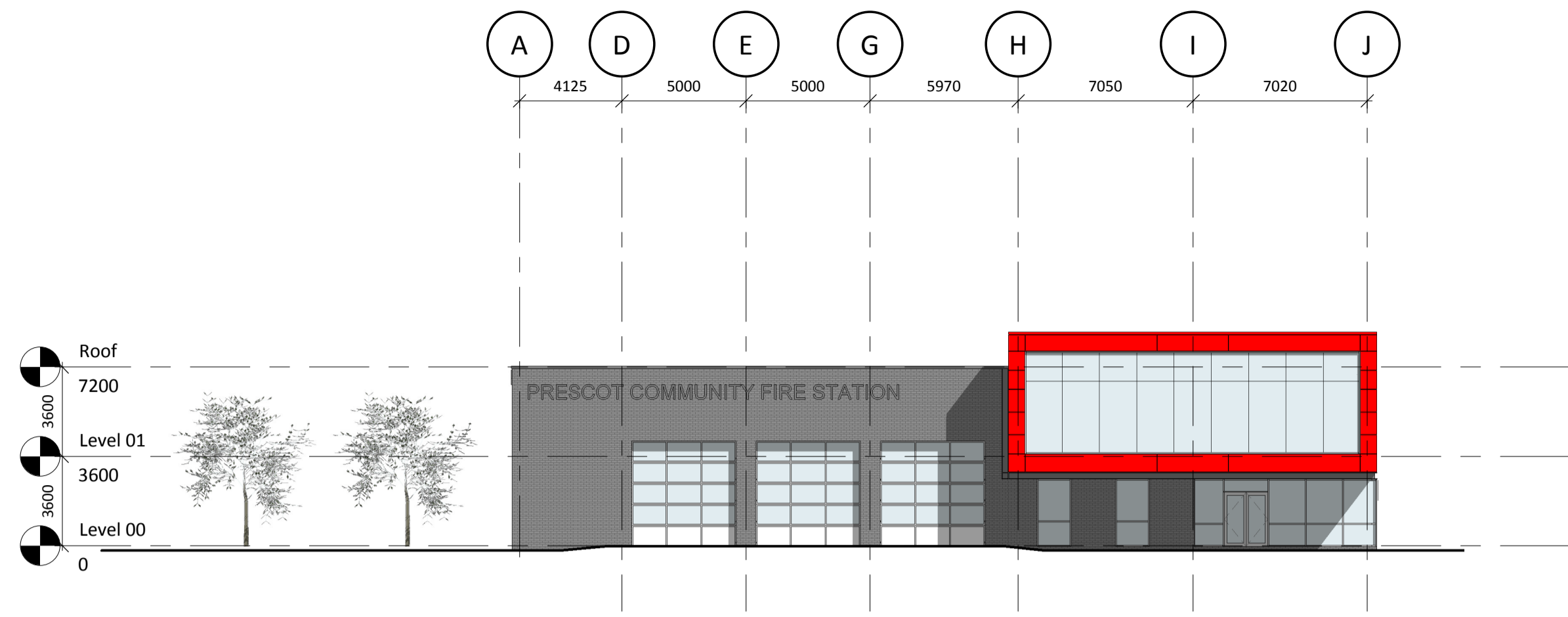
The use of this data by the recipient acts as an agreement of the following statements. Do not use this data if you do not agree with any of the following statements:

All drawings are based upon site information supplied by third parties and as such their accuracy cannot be guaranteed. All features are approximate and subject to clarification by a detailed topographical survey, statutory service enquiries and confirmation of the legal boundaries.

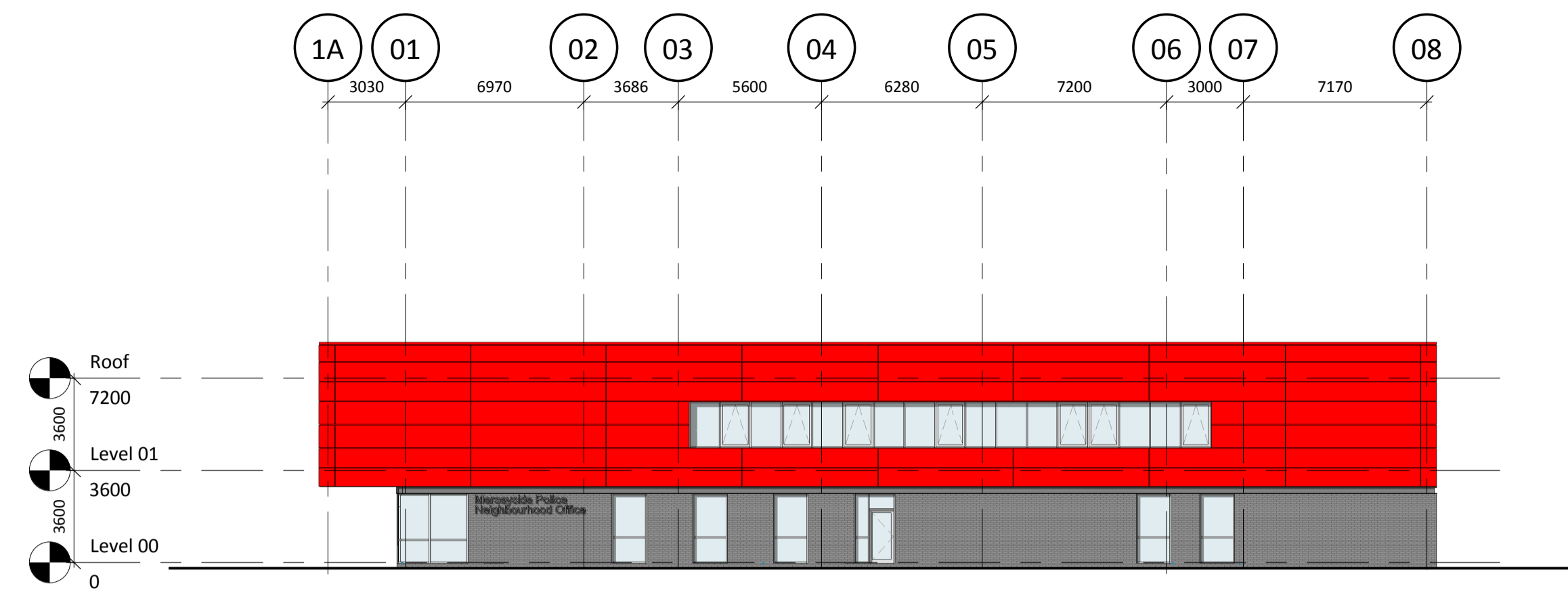
The controlled version of this drawing should be viewed in DWG or PDF format not DWG or other formats. All prints of this drawing must be made in full colour.

Where this drawing has been based upon Ordnance Survey data, it has been reproduced under the terms of Ryder Licence No. 100000144. Reproduction of this drawing in whole or in part is prohibited without the prior permission of Ordnance Survey.

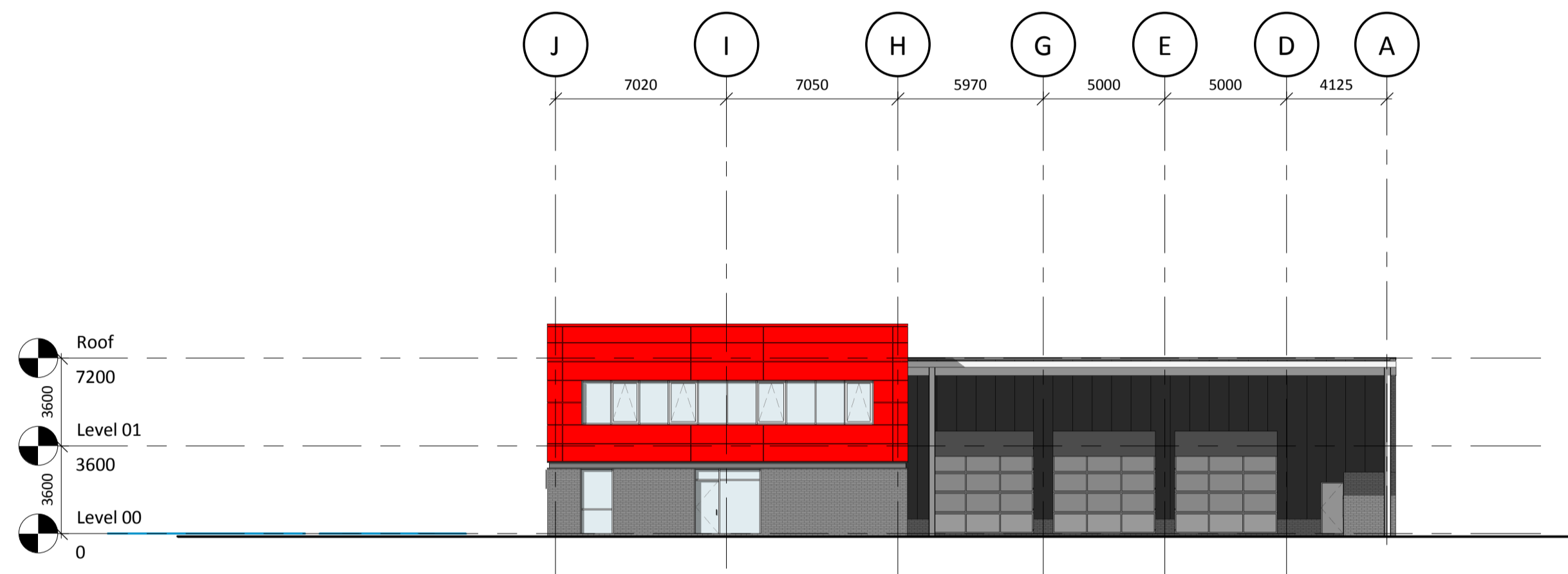
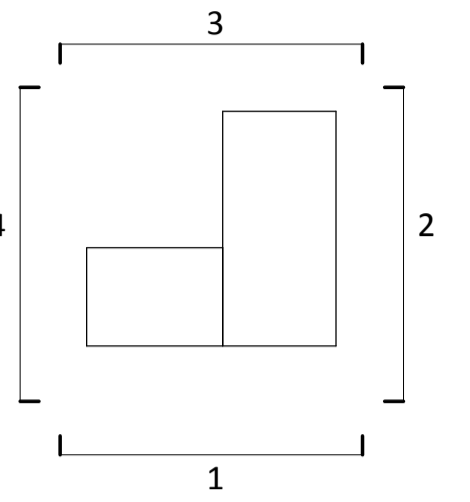
Do not scale the drawing. Use figured dimensions in all cases. Check all dimensions on site. Report any discrepancies in writing to Ryder before proceeding.



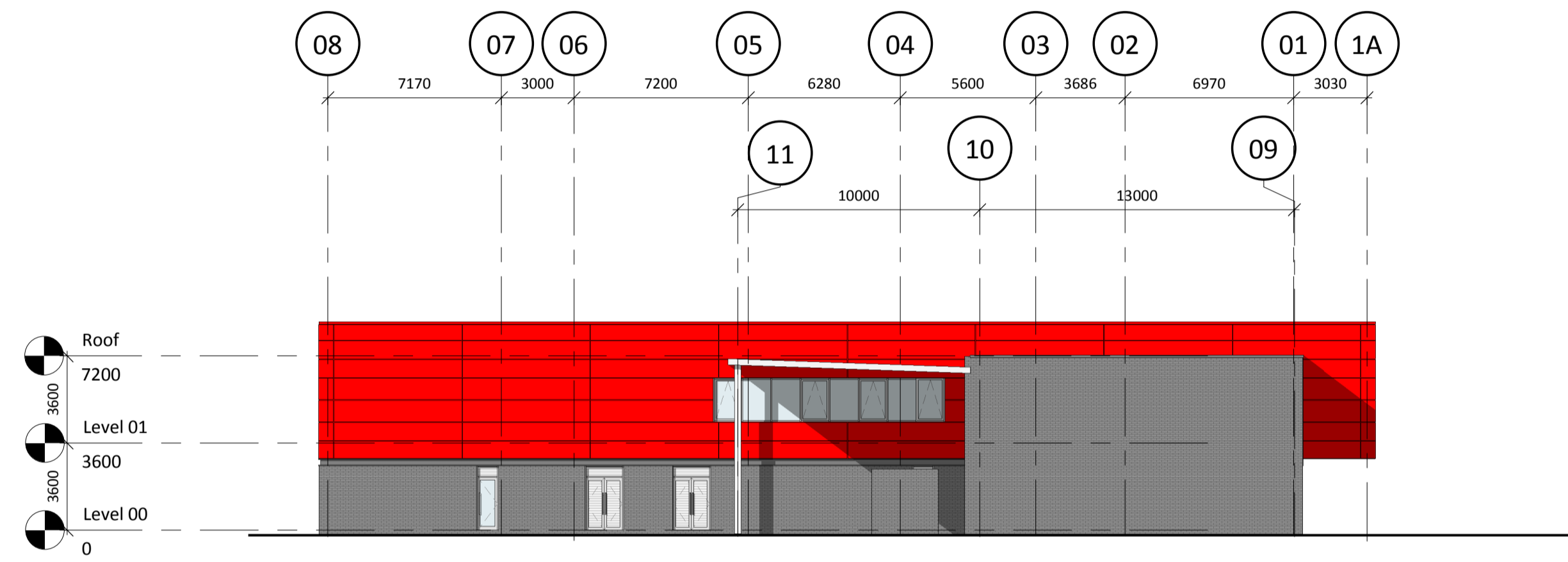
Elevation 1 (East)  
1:200



Elevation 2 (North)  
1:200



Elevation 3 (West)  
1:200



Elevation 4 (South)  
1:200



Revision	Date	Drawn by	Checked by
P7	04/09/15	AAI	SFr
Updated inline with plan changes. First floor ribbon window length reduced.			
P6	10/08/15	AAI	SFr
Updated to include panel joints to cladding.			
P5	23/07/15	AAI	SFr
Station redesigned due to withdrawal of NWAS. New proposal is a 2 storey 3 bay station. Previous revisions removed for clarity.			
P1	21/04/15	AAI	SFr
First issue			

Amendment:  
Purpose of Issue  
**Preliminary**  
Project  
Merseyside Fire and Rescue Service  
Prescot Community Fire Station  
Prescot  
Drawing  
GA Elevations

Drawing No.	Project ID	Originator	Zone	Level	Type	Role	Number
PRESCOT	-	RYD	-	00	-	ZZ	-
Ryder Project No.	Scale at A1	Drawn By	Status	Revision			
2864-00-00	1:200	AAI	D1	P7			